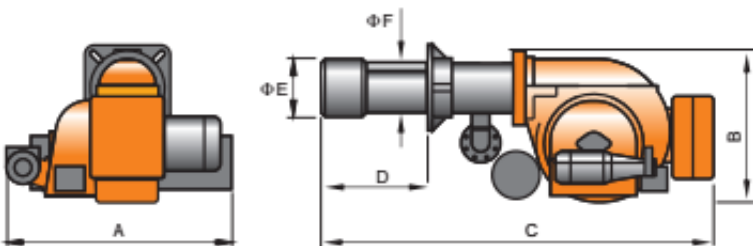


---

# Dual Fuel Burner Heavy Oil/Gas Sliding/modulating Heavy Oil & Gas Dual fuel Burner M180/250/350/600/450 / 550 / 850 / 1000 GH S/M



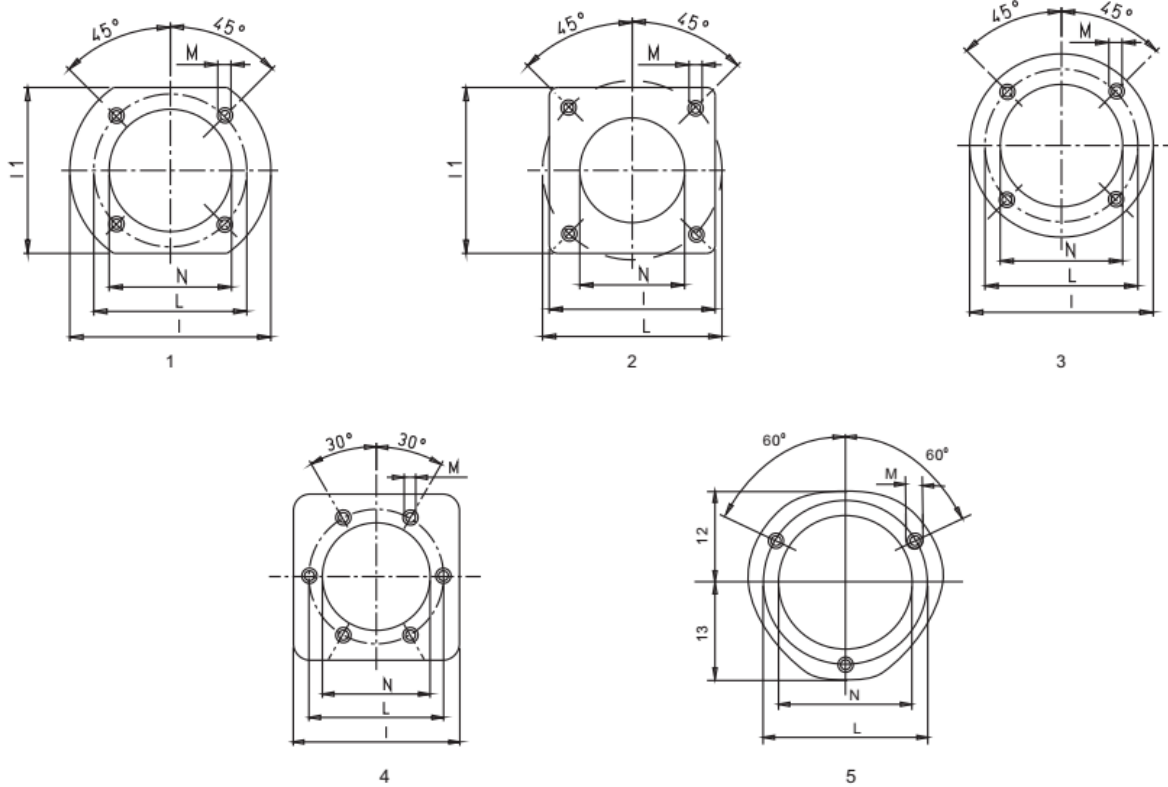
## Technological performance and structural descriptions

1. Alternate methane gas/light oil burner.
2. Two-stage progressive output operation.
3. Air-gas mixing at blast-pipe and high pressure mechanical atomisation of fuel using nozzle.
4. Ability to obtain optimal combustion values by regulating combustion air and blast-pipe.
5. Maintenance facilitated by the fact that the mixing unit and the atomisation unit can be removed without having to remove the burner from the boiler.

6. Minimum and maximum air flow regulation for first and second stage by means of electric servomotor with pause closure of gate to prevent any heat dispersion to flue.
7. The servo motor which fixed with a cam can adjust the consumption for fuel and air. to prevent any heat dispersion to flue.
8. "Equipped with one flange and one insulating seal for boiler fastening.
9. Combustion air intake with air flow adjustment device.
10. Sliding boiler coupling flange to adapt to head protrusion of the various types of boilers.
11. Adjustable blast-pipe with stainless steel nozzle and deflector disk in steel.
12. A three-phase electric motor to run fan and another to run the pump.
13. Flame presence check by UV photo-electric cell.
14. Electrical plant protection rating Ip40.

功率 Power	型号 Model	最大粘度 Max Viscidity E@50℃	电源 Powersupply	电机功率 Motorpower KW	电加热器 Pre-heater KW	A	B	C	D	E	F	包装尺寸 Packing Size	重量 Netweight
KW						宽mm Width	高mm Height	长mm Length	筒长mm Length of blast tube	头φmm Head diameter	筒φmm Cylinder diameter	LxPxH mm	Kg
688~1981	M-180GHS/M	60	380V 50Hz	3	12	945	675	1865	330~640	290	244	1950x1150x950	240
1127~3380	M-250GHS/M	60	380V 50Hz	7.5	18	1033	860	1980	320~550	356	275	1950x1150x950	300
1304~3878	M-350GHS/M	60	380V 50Hz	7.5	18	945	860	1980	320~550	356	275	1950x1150x950	320
1840~5500	M-600GHS/M	60	380V 50Hz	15	20	978	860	1920	500	365	325	2050x1100x910	370
1125~4525	M-450GHS/M	60	380V 50Hz	9	16	985	805	1550	327	290	316	1170x1400x940	340
1460~6170	M-550GHS/M	60	380V 50Hz	12.5	16	985	805	1650	327	350	385	1170x1400x940	360
2025~8750	M-850GHS/M	60	380V 50Hz	18.5	24	1300	1094	2100	430	469	480	2250x1600x950	400
2025~10900	M-1000GHS/M	60	380V 50Hz	22	24	1300	1094	2100	430	469	480	2250x1600x950	410

Dual fuel Burner and boiler connecting flange



型号	I	I1	I2	I3	最小 最大	M	N	图号
M-180GH S/M	460		260	290	400	M20	300	4
M-250GLR			260	290	462 520	M20	370	5
M-250GL S/M			260	290	462 520	M20	370	5
M-250GH S/M			260	290	462 520	M20	370	5
M-350GH S/M					462 520	M20	330	5
M-450GL S/M	460				330	M16	375	3
M-450GH S/M	460				330	M16	375	3
M-550GL S/M	430				390	M16	420	2
M-550GH S/M	430				390	M16	420	2
M-600GL S/M	580				520	M20	380	4
M-600GH S/M	580				520	M20	380	4
M-850GL S/M	600				550	M16	500	4
M-850GH S/M	600				550	M16	500	4
M-1000GL S/M	600				550	M16	500	4
M-1000GH S/M	600				550	M16	500	4

“N” 值为炉壁开口 “N” means the size of the hole on the chamber.

\* 当燃烧头 “E” 值大于 “N” 值时，如果该锅炉没有炉门的情况下，请开大于燃烧头 “E” 的值，并需要增加一块过度安装法兰来联接，不详处请咨询销售办公室。（如77页 图GD）

When "E" is greater than "N", besides without furance door on this boiler, please open the hole "N" greater than "E" and need one extravagant flange to install the burner. Contact sell office if need any more details.

Product link : <https://www.eburn-burner.com/?p=1285>