

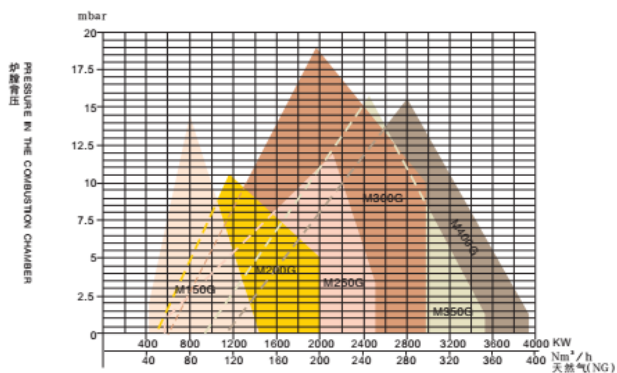
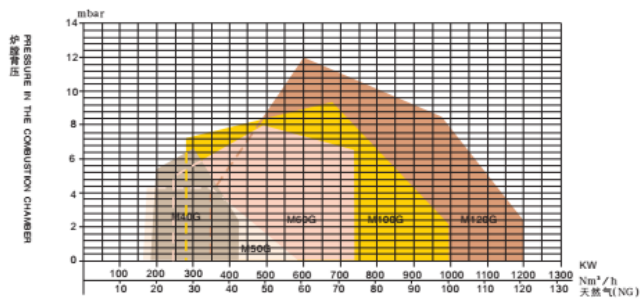
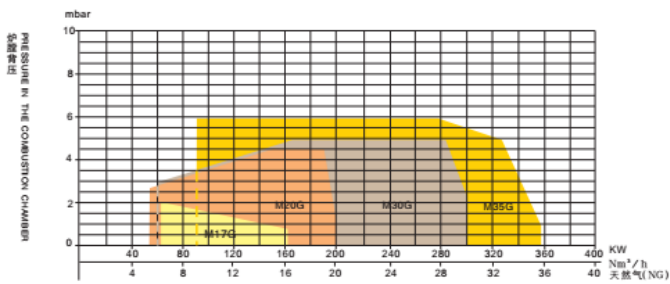
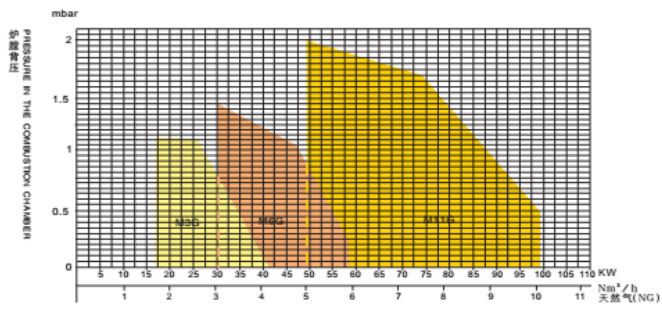
Gas Burner Two-Stage



Technical data

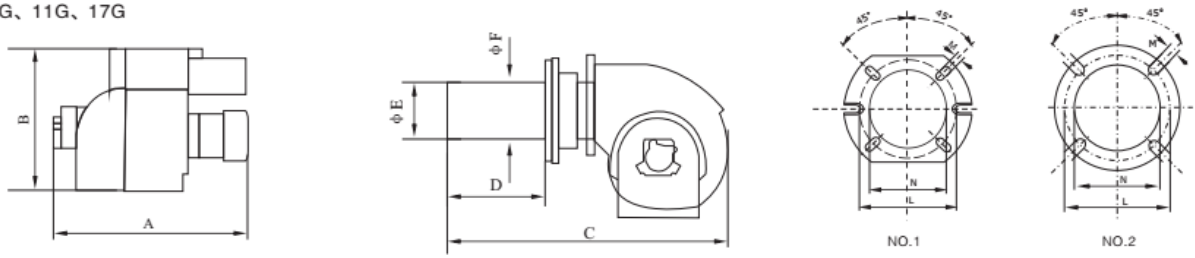
Model	Output max.		Output min.		Gas pressure gas mbar	Power supply V	Motor KW	Packing Size L×P×H mm	weight	
	KW	Kcal/h×104	KW	Kcal/h×104					Kg	
M-17GRF	168	14.5	69	6	20-200	230V/50Hz	0.15	580×460×340	15	
M-20GRF	200	17.2	50	5	20-200		0.37	840×530×450	27	
M-30GRF	300	25.9	60	5.2	20-200		0.37	940×540×450	43	
M-35GRF	358	30.9	90	7.8	20-200		0.37	990×540×450	46	
M-40GRF	425	36.6	185	16	30-300	380V/50Hz	0.37	900×650×450	76	
M-60GRF	738	63.6	248	21.4	30-300		1.1	1000×760×550	108	
M-100GRF	995	85.8	280	24	30-300		1.1	1000×760×550	110	
M-120GRF	1200	103.5	350	30	30-300		1.5	1050×850×580	120	
M-150GRF	1428	123	414	35.7	30-300		2.2	1150×850×650	144	
M-200GRF	2000	175	490	42	40-300		3.0	1400×1080×800	306	
M-250GRF	2500	220	590	50.9	40-300		7.5	1400×1080×800	310	
M-300GRF	2982	257	657	57	40-300		7.5	1500×1080×800	324	
M-350GRF	3500	300	924	80	40-300		7.5	1500×1080×800	330	
M-400GRF	3950	340	924	80	40-300		9.0	1500×1080×800	350	

One/two stage curve diagram

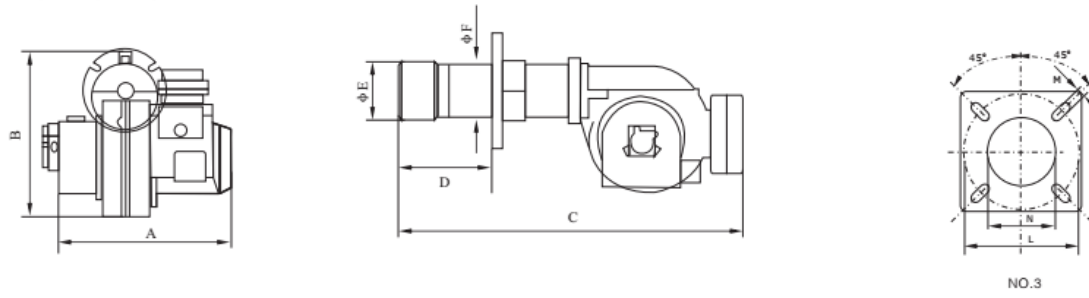


Overall dimensions

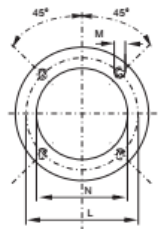
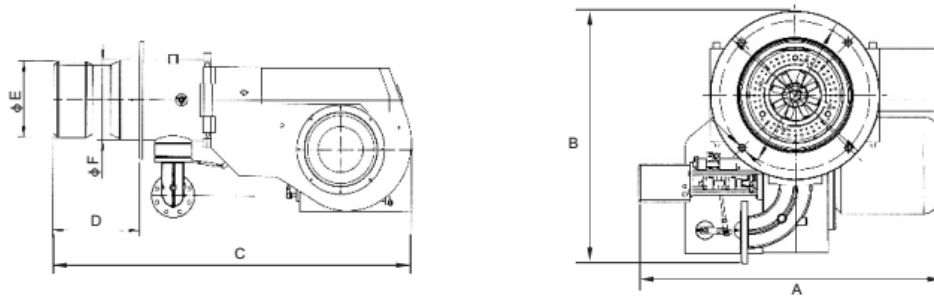
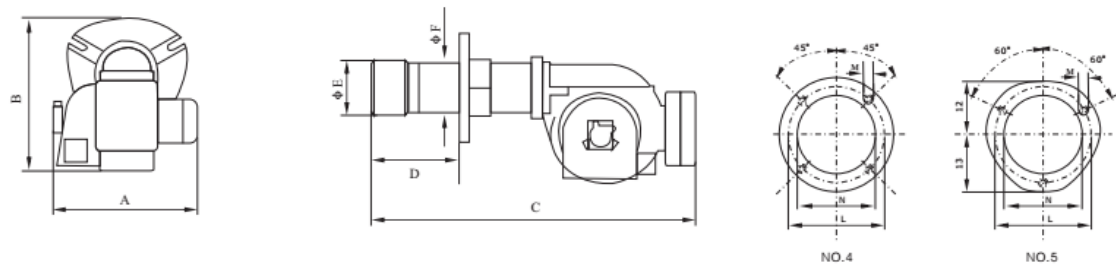
M-3G、6G、11G、17G



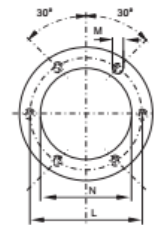
M-20G、30G、35G、40G、50G



M-60G、100G、120G、150G、200G、250G、300G、350G、400G



NO:6



NO:7

Model	A	B	C	D	E	F	L mm The size between the	Nφmm	M	NO .
-------	---	---	---	---	---	---	---------------------------	------	---	------

							installation holes			
	Width mm	Height mm	Length mm	Length of blast tube mm	φmm Head diameter	φmm Cylinder diameter				
M-450GS /M	962	740	1540	335	290	320	400	330	M16	1
M-550GS /M	965	780	1660	399	350	380	480	390	M16	1
M-650GS /M	1125	1075	1645	430	480	470	550	500	M16	2
M-1000GS /M	1230	1094	1670	430	480	470	550	500	M16	2

"N" means the size of the hole on the chamber.

Model		A	B	C	D	E	FL mm The size between the installation holes		N	φmm	M	NO .
		Width mm	Height mm	Length mm	Length of blast tube mm	φmm Head diameter	φmm Cylinder diameter	min	max	mm		
M-3G		245	270	410	50-105	90	90	130	155	95	M8	1
M-6G		245	271.5	410	50-105	90	90	130	155	100	M8	1
M-11G	M-11TG	245	271.5	475	90-150	108	90	130	155	120	M8	1
M-17G	M-17TG	350	350	650	80-200	108	95	130	155	120	M8	2
M-20G		475	365	740	120-280	135	114	170	206	140	M10	3
M-30G	M-30TG	475	365	835	170-300	135	135	200	244	145	M12	3
M-35G	M-35TG	475	365	925	130-350	155	135	200	244	165	M12	3
M-40G	M-40TG	470	397	1100	150-330	155	135	200	244	165	M12	3
M-50G		475	397	1150	150-350	155	135	200	244	165	M12	3
*M-60G	*M-60TG	560	485	1270	170-400	205	160	233		190	M12	4
*M-100G		560	485	1330	240-460	230	160	233		190	M12	4
*M-100TG		560	485	1330	220-440	270	195	276		220	M16	4
*M-120G		590	500	1400								
*M-150G		655	587	1500	220-440	270	195	276		220	M16	4
*M-150TG		655	587	1500	300-600	320	220	339		240	M16	4
*M-200G		830	730	1850								
*M-250G		875	730	1850	300-600	320	220	339		240	M16	4
M-250TG		875	730	1850	275-450	356	275	480	510	390	M20	5
M-300G		875	757	1850								
M-350G		880	757	1850	275-450	356	275	480	510	390	M20	5
M-400G		880	760	1850	275-450	356	275	480	510	390	M20	5

"N" means the size of the hole on the chamber.

When "E" is greater than "N", besides without furnace door on this boiler, please open the hole "N" greater than "E" and need one extravagant flange to install the burner. Contact sell office if need any more details.

Product link : <https://www.eburn-burner.com/?p=1221>