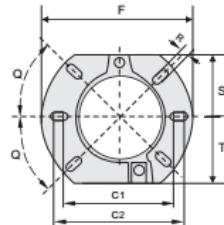
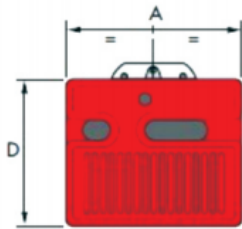


Ligh oil burner 40G

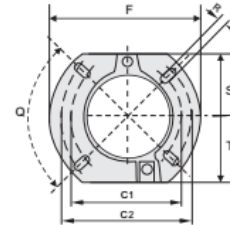
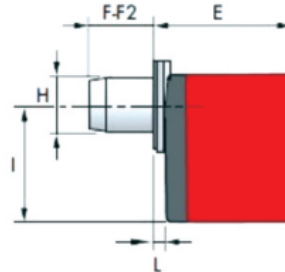


Model	E@20?	Power KW	kg/h	Combustion Type	Moto KW	photocell	Power
M-G5	1.5	28-60	2.3-5	ON/OFF	0.09	40G	230V / 50Hz
*M-G5LC	1.5	28-60	2.3-5	ON/OFF	0.09	40G	230V / 50Hz
M-G10	1.5	54-120	4.5-10	ON/OFF	0.09	40G	230V / 50Hz
*M-G10LC	1.5	54-120	4.5-10	ON/OFF	0.09	40G	230V / 50Hz
M-G20	1.5	95-213	8-18	ON/OFF	0.15	40G	230V / 50Hz
*M-G20LC	1.5	95-213	8-18	ON/OFF	0.15	40G	230V / 50Hz
M-G20S	1.5	95-240	8-20	ON/OFF	0.15	40G	230V / 50Hz

Burner size chart



M-G5/G5LC/G10/G10LC



M-G20/G20LC/G20S

Model	A	D	E	F	F2	H	I	L	C1	C2	F	Q	R	S	T
M-G5	272	233	236	107	-	89	180	37	130	150	180	45	11	72	75
M-G5LC	272	233	236	107	-	89	180	37	130	150	180	45	11	72	75
M-G10	305	262	261	108	-	105	204	40	140	170	189	45	11	83	83
M-G10LC	305	262	261	108	-	105	204	40	140	170	189	45	11	83	83
M-G20	350	298	295	118	-	125	230	41	160	190	213	90	11	99	99
M-G20LC	350	298	295	118	-	125	230	41	160	190	213	90	11	99	99
M-G20S	350	298	295	118	-	125	230	41	160	190	213	90	11	99	99

*LC?????????

Product link : <https://www.eburn-burner.com/?p=1341>